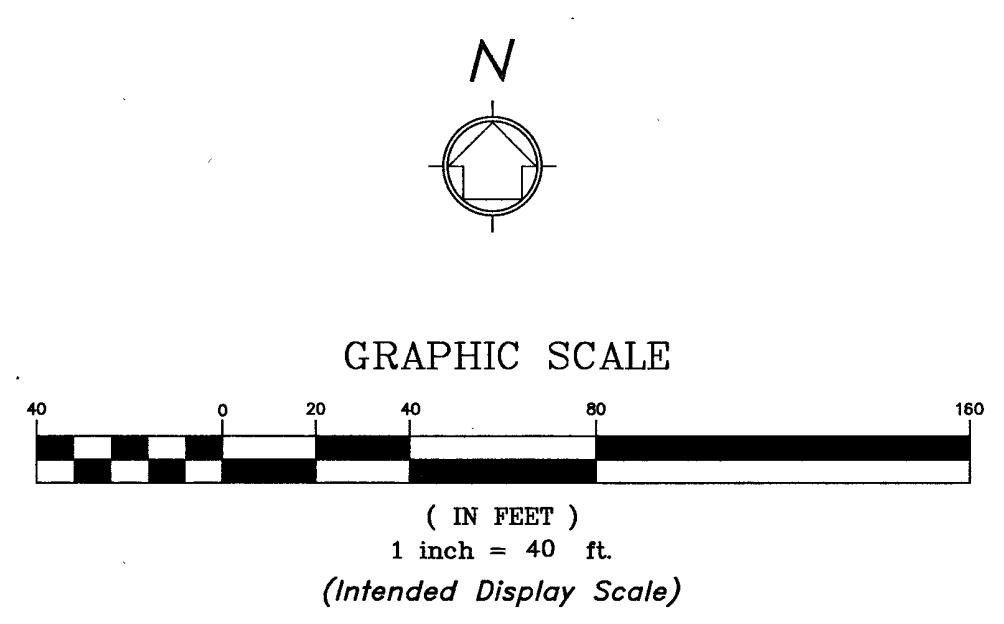
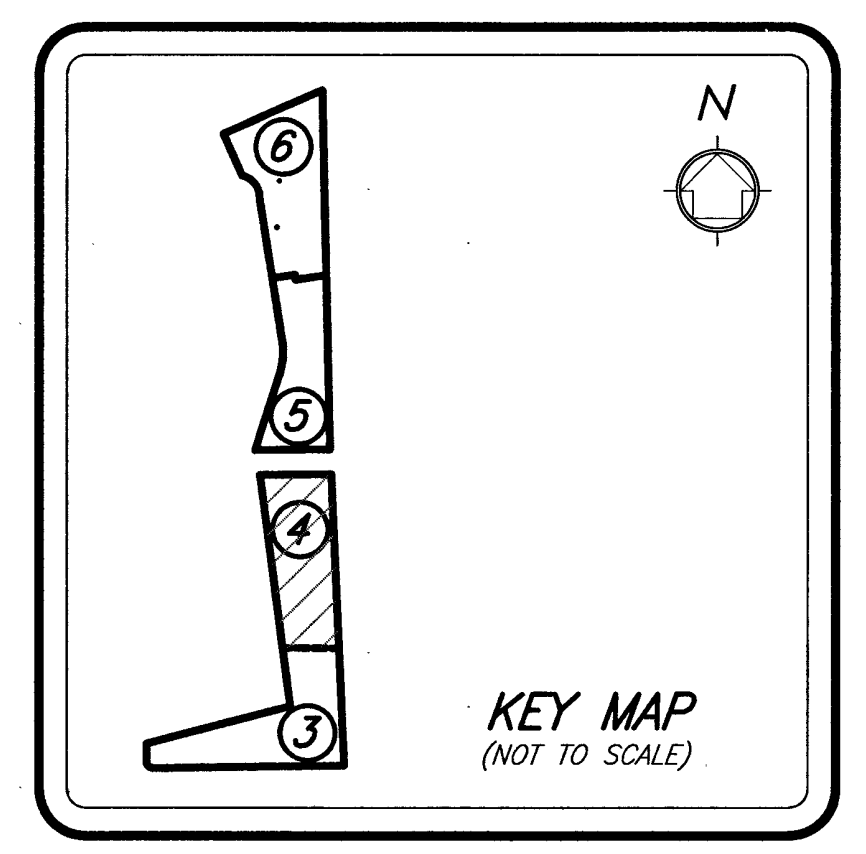
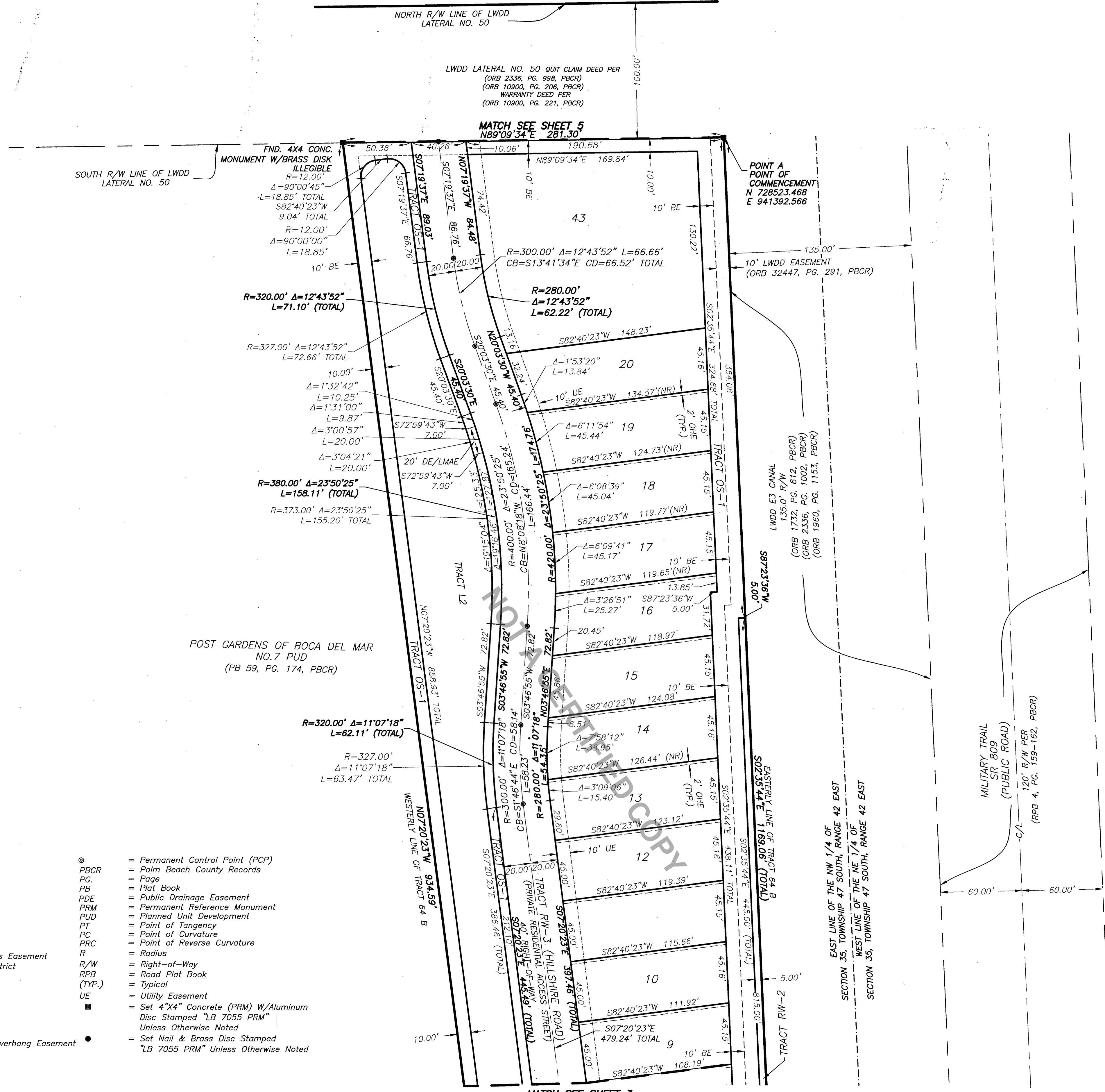


BOCA DEL MAR PUD - BRIDGEWATER COVE AT MIZNER VILLAGE

BEING A REPLAT OF A PORTION OF TRACT 64 B, BOCA DEL MAR NO. 7 PUD, PLAT BOOK 30, PAGES 210 THROUGH 217 INCLUSIVE OF THE PUBLIC RECORDS, PALM BEACH COUNTY, FLORIDA, LYING AND SITUATE IN SECTION 26 & 35, TOWNSHIP 47 SOUTH, RANGE 42 EAST, PALM BEACH COUNTY, FLORIDA.

88

SHEET 4 OF 6 SHEETS



- LEGEND**
- | | |
|--|---|
| BE = Buffer | ⊙ = Permanent Control Point (PCP) |
| C/L = Center Line | PBCR = Palm Beach County Records |
| CCR = Certified Corner Record | PG = Page |
| CONC. = Concrete | PB = Plat Book |
| CB = Cord Bearing | PDE = Public Drainage Easement |
| CD = Cord Distance | PRM = Permanent Reference Monument |
| Δ = Delta (Central Angle) | PUD = Planned Unit Development |
| DE = Drainage Easement | PT = Point of Tangency |
| FPL = Florida Power & Light | PC = Point of Curvature |
| FND. = Found | PRC = Point of Reverse Curvature |
| LMAE = Lake Maintenance Access Easement | R = Radius |
| LWDD = Lake Worth Drainage District | R/W = Right-of-Way |
| L = Length of Arc | RPB = Road Plat Book |
| LB = Licensed Business | (TYP.) = Typical |
| NAD = North American Datum | UE = Utility Easement |
| NO. = Number | ■ = Set 4"x4" Concrete (PRM) W/Aluminum Disc Stamped "LB 7055 PRM" Unless Otherwise Noted |
| NT = Non Tangent | ● = Set Nail & Brass Disc Stamped "LB 7055 PRM" Unless Otherwise Noted |
| (NR) = Non Radial | |
| ORB = Official Records Book | |
| OHE = Maintenance and Roof Overhang Easement | |

NOTE:
 COORDINATES SHOWN ARE GRID COORDINATES DATUM - NAD 83 (1990 ADJUSTMENT)
 STATE PLANE FLORIDA EAST ZONE
 TRANSVERSE MERCATOR PROJECTION
 LINEAR UNIT = U.S. SURVEY FEET
 ALL DISTANCES ARE GROUND
 SCALE FACTOR = 1.000032176
 PLAT BEARING = GRID BEARING
 GROUND DISTANCE X SCALE FACTOR = GRID DISTANCE



2035 Vista Parkway, West Palm Beach, FL 33411
 Phone No. 866.909.2220 www.wginc.com
 Cert No. 6091 - LB No. 7055

THIS INSTRUMENT WAS PREPARED BY KELSEY M. SMITH, P.S.M., PROFESSIONAL SURVEYOR AND MAPPER, LICENSE NO. 7096 FOR THE FIRM: WGI, INC.